

Like a fine wine, Vintage Products have grown through generations of experience to become the ultimate outdoor cooking and entertainment line. From our remarkably powerful grills and side burners to complete beverage service and refrigeration, the Vintage brand speaks of the finest craftsmanship and truly intelligent design. The Vintage Outdoor Kitchen offers chefs of all abilities the power to create extraordinary meals in an open-air environment.

As any true connoisseur knows, all of the right elements must combine to create something exceptional. Since 2001, Vintage has been that synthesis of style, versatility, and performance.



When you want the best grill possible and have limited space, the Vintage 30" gas grill is your clear choice.

- ⦿ 55,000 BTUs of grilling power from two 18SR stainless steel conventional burners.
- ⦿ 15,000 BTU flush-mounted infrared rotisserie burner.
- ⦿ 542 square inch grilling area with stainless steel grates.
- ⦿ Dedicated adjustable 7,000 BTU burner smoking system with large drawer.
- ⦿ Built-in Halogen grill lighting.
- ⦿ Built-in and cart models available.
- ⦿ Propane or natural gas.

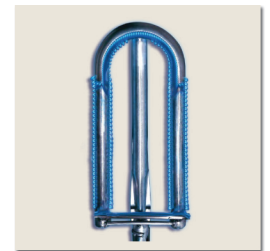
Model Shown: VBQ30G - 30" Grill
VBQ30GC - 30" Cart



The 36" models are truly powerful culinary tools for the outdoor chef looking to take the next step in outdoor entertainment.

- ⦿ Three 18SR stainless steel burners producing 82,500 BTUs of grilling power.
- ⦿ 15,000 BTU flush-mounted infrared rotisserie burner.
- ⦿ 660 square inch grilling area with stainless steel grates.
- ⦿ Built-in Halogen grill lighting.
- ⦿ Built-in and cart models available.
- ⦿ Propane or natural gas.
- ⦿ Sear Zone model available (VBQ36SZG).

Model Shown: VBQ36G - 36" Grill
VBQ36GC - 36" Cart



The 42" models are available with a synthesis of features that offer unparalleled performance and reliability in your outdoor kitchen.

- ⦿ Three 18SR stainless steel burners producing 82,500 BTUs of grilling power.
- ⦿ 18,000 BTU flush-mounted infrared rotisserie burner.
- ⦿ 770 square inch grilling area with stainless steel grates.
- ⦿ Dedicated adjustable 7,000 BTU burner smoking system with large drawer.
- ⦿ Built-in Halogen grill lighting.
- ⦿ Built-in and cart models available.
- ⦿ Propane or natural gas.
- ⦿ Sear Zone model available (VBQ42SZG).

Model Shown: VBQ42G - 42" Grill
VBQ42GC - 42" Cart



The 56" models are the perfect mix of power and versatility needed for the serious outdoor chef.

- ⦿ Three 18SR stainless steel burners producing 82,500 BTUs of grilling power plus an additional 27,500 BTU Infrared Ceramic Sear Zone.
- ⦿ Dual 15,000 BTU flush-mounted infrared rotisserie burners.
- ⦿ 998 square inch grilling area with stainless steel grates.
- ⦿ Dedicated adjustable 7,000 BTU burner smoking system with large drawer.
- ⦿ Built-in Halogen grill lighting.
- ⦿ Built-in and cart models available.
- ⦿ Propane or natural gas.

Model Shown: VBQ56SZG - 56" Grill
VBQ56GC - 56" Cart





Double Side Burner
VSB2G



SideSear Burner
VGSZ



24" PowerMaxx Burner
VPMAX24
24" Accessory Drawer
VDR24



Food Warmer
VFW



Vinyl Covers
Available in 30", 36", 42",



Insulated Jackets
Available in 30", 36",
42", & 56" sizes

& 56" sizes for built-in and cart applications



17" Access Door
VAD17



Double Access Doors
VAD30 - 30" Unit
VAD36 - 36" Unit
VAD42 - 42" Unit



2 Drawer System
V2DR



Paper Towel Holder
VTH



2 Drawer/Utensil
Storage
VU2DR



Trash/Recycle
Center
VTRC



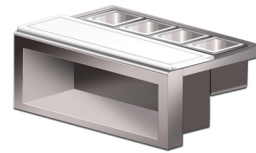
Door/Drawer Combo
VDDC



Pantry/Drawer Combo
VPDC42 - 42" Unit
VPDC56 - 56" Unit



Sealed Pantry
VDSP30 - 30" Unit
VDSP36 - 36" Unit
VDSP42 - 42" Unit



30" Plating &
Garnish Center
VPS30P



Ice Chest/Bartender
(Speed Rail Included)
VCTIC



Prep & Waste Chute
VPWC



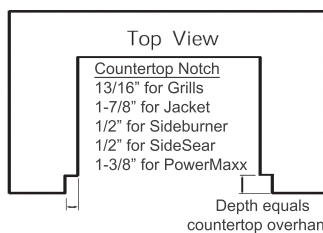
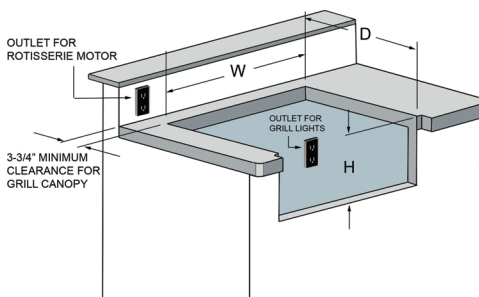
Blender Station
VBS



24" Outdoor Refrigerator
HS24RO1R -Single/Double Tap



24" Beer Dispenser
HS24RO1R w/ HKEG1



GRILL	Cutout Dimensions			Model	Overall	Cutout
	W	D	H			
VBQ30	28-1/2"	23"	10-1/4"	V2DR	16 4/5" W X 14 1/2" H X 21"D	14 5/8" W X 12 1/4" H
VBQ36	34-1/2"	23"	10-1/4"	VAD17	16 1/2" W X 21 1/8" H	14 1/8" W X 18 3/4" H
VBQ42	40-1/2"	23"	10-1/4"	VAD30	30" W X 21 1/8" H	27 5/8" W X 18 3/4" H
VBQ56	54-1/2"	23"	10-1/4"	VAD36	36" W X 21 1/8" H	33 5/8" W X 18 3/4" H
INSULATED JACKET	Cutout Dimensions			VAD42	42" W X 21 1/8" H	39 5/8" W X 18 3/4" H
	W	D	H	VBS	24" W X 14 1/2" H	21 7/8" W X 12 1/4" H
VIJ30	31-3/4"	24-3/8"	11"	VCTIC	27 5/8" W X 13 1/2" H X 20 5/8" D	26" W X 11 3/4" H X 19" D
VIJ36	37-3/4"	24-3/8"	11"	VDDC	31 4/5" W X 21 1/8" H X 21"D	29 1/2" W X 18 7/8" H
VIJ42	43-3/4"	24-3/8"	11"	VDR24	24" W X 14 1/2" H X 21" D	22 1/4" W X 12 1/2" H X 20" D
VIJ56	57-3/4"	24-3/8"	11"	VDSP30	30 3/8" W X 21 1/8" H	28 1/8" W X 18 7/8" H
SIDE BURNER SIDESEAR	Cutout Dimensions			VDSP36	36 3/8" W X 21 1/8" H	34 1/8" W X 18 7/8" H
	W	D	H	VDSP42	42 3/8" W X 21 1/8" H	40 1/8" W X 18 7/8" H
VSB2G	13-1/4"	23"	10-1/4"	VDT30G	29 13/16" W X 25 1/2" D X 11 1/16" D	28 1/2" W X 23" D X 10 1/4" H
VGSZ	13-1/4"	23"	10-1/4"	VEN17	16" W X 20 1/2" H	14 1/4" W X 18 3/4" H
POWER MAXX	Cutout Dimensions			VEN30	29 1/4" W X 20 1/2" H	27 3/4" W X 19" H
	W	D	H	VEN36	35 1/4" W X 20 1/2" H	33 3/4" W X 19" H
VPMAX24	21-1/2"	22-1/2"	10-1/4"	VEN42	41 1/4" W X 20 1/2" H	39 3/4" W X 19" H
SIDE BURNER SIDESEAR	Cutout Dimensions			VFW	14" W X 26 5/8" D X 11 1/16"	13 1/4" W X 23" D X 10 1/4" H
	W	D	H	VPDC42	42" W X 21 1/8" H X 21"D	39 3/4" W X 18 7/8" H
VSB2G	13-1/4"	23"	10-1/4"	VPDC56	56" W X 21 1/8" H X 21"D	53 3/4" W X 18 7/8" H
VGSZ	13-1/4"	23"	10-1/4"	VPS30P	30" W X 11" H	26 5/8" W X 10" H
VPMAX24	21-1/2"	22-1/2"	10-1/4"	VPWC	10 1/4" W X 12 7/16" D X 1 5/16" H	6 1/4" W X 8 1/4" D
VTRC	19 3/10" W X 26 1/2" H X 24" D			VTH	16 1/2" W X 10 7/10" H	14 1/4" W X 8 3/8" H
VU2DR	16 4/5" W X 21 1/8" H X 21" D			VTRC	19 3/10" W X 26 1/2" H X 24" D	17 1/4" W X 24 1/16" H X 24 1/4" D
HS24RO1R	24" W X 34 1/4" H X 24" D			VU2DR	16 4/5" W X 21 1/8" H X 21" D	14 5/8" W X 18 7/8" H
				HS24RO1R	24" W X 34 1/4" H X 24" D	24 1/4" W X 34 1/2" H X 24 1/4" D